



HALO 125 HALF ROUND SPOUTING

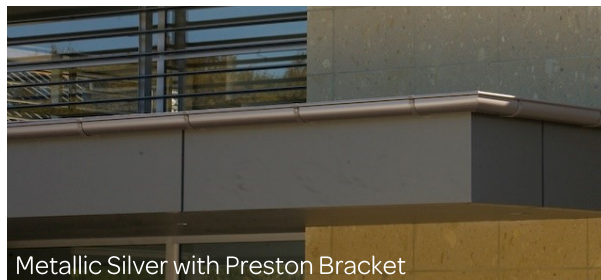


Overview

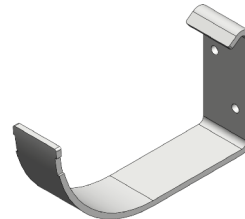
The smallest of our “Designer Series”, the Halo 125 combines practical water flow with elegant European styling.

Features

- ✓ Round shape reduces water retention
- ✓ European Lineage
- ✓ Tough marine grade materials
- ✓ Bracket Styles to suit finish
- ✓ Up to 20 year material warranty
- ✓ Matching downpipes
- ✓ 33 Designer colours and more!



Metallic Silver with Preston Bracket



Preston Bracket

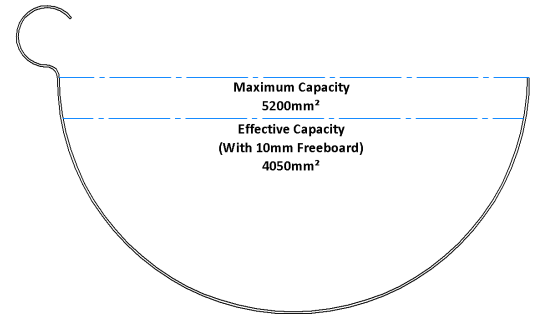
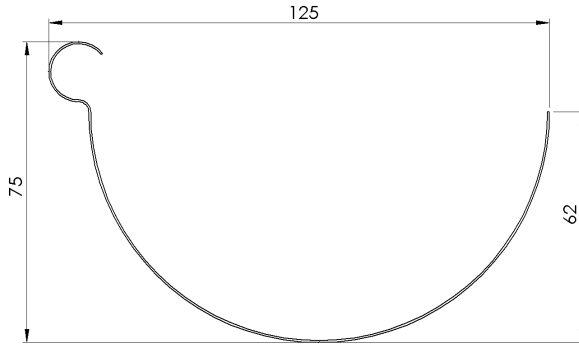
Finish Range	Spouting Material	Colour Choice	Bracket Material	Bracket Options	Downpipe Options
CG Range	MagnaFlow™	Top 15 Colours	Aluminium	Preston	65mm Round 80mm Round
Designer Range	MagnaFlow™	34 Designer Colours	Aluminium		
Copper*	Pure Copper	Natural	Brass		

Available from these Continuous Group Locations:

NORTHLAND | AUCKLAND | WAIKATO | BAY OF PLENTY
 TARANAKI | GISBORNE | HAWKES BAY | MANAWATU | WELLINGTON
 NELSON | MARLBOROUGH | WEST COAST | CANTERBURY | OTAGO | SOUTHLAND



HALO 125 HALF ROUND SPOUTING



PRODUCT SPECIFICATIONS		CAPACITY SPECIFICATIONS	
MagnaFlow™ Pre-painted Steel	0.55mm G300 with a minimum of 200gsm alloy/zinc coating.	Maximum cross sectional area	5,200mm ²
Pure Copper Copper 3/4 Hard	0.55mm Grade C12200	Effective cross sectional area with 10mm freeboard	4,050mm ²
Preston Bracket	3.00mm Aluminium 5052 H34 2.50mm Brass—hard	Flow Capacity	52 Litres/min
Recommended Maximum bracket spacing	750mm 600mm where snow fall is possible	Recommended fall	1:500 = 2mm per 1 metre
Recommended Fixings	Minimum Class 4 screw &/or rivet fasteners compatible with substrate and bracket material.	Minimum Downpipe cross section	3,215mm ²
		Recommended round	80mm Ø = 4,776mm ²

Scope of use	Continuous Group rainwater systems are intended to collect and channel water that runs off a roof. It is intended that the metal spouting be placed at the perimeter of the building (Positioned outside the building envelope).
NZBC Compliance	Test information available from Pacific Coilcoaters, New Zealand Steel and Ambro Metals, combined with past history of rainwater products indicate, that provided the product use and maintenance is in line with the guidelines contained in the current literature, Continuous Group rainwater systems can be expected to meet the performance criteria in clause E2 of the New Zealand building code.
Durability	All copper, brass and aluminium products listed above are fit for purpose in environment zone B, C, D and E* Pre-painted steel products are fit for purpose in environment Zone B and C* They may be used in environment zone D subject to a pre-approval warranty application based on site address* *In all cases, areas with high wind &/or salt &/or thermal/industrial atmospheric conditions may require specific engineering design (S.E.D) Reference: Section 4, "Durability" from NZS3604:2011.
Maintenance	Continuous Group rainwater systems require regular maintenance to ensure the useful life of the products. Minimum maintenance interval of every 6 months or as often as needed to avoid build up of contaminants (dirt, salt, pollen etc.) on the spouting surface. Simply spray and rinse with water and/or if necessary scrub with a soft nylon brush. More information and specific maintenance products are available on our website www.continuous.co.nz/care-and-maintenance
Warranty	MagnaFlow™ : Environment zone B & C—10 year paint warranty ; 12 year perforation warranty. MagnaFlow™ : Environment zone D—10 year paint warranty ; 10 year perforation warranty. Pure Copper : 20 year material and perforation warranty. Full details and conditions of our comprehensive warranty can be found at www.continuous.co.nz/warranties